

B/ 20005/597/95
A/B
Planning Permit No.
APPROVED
SUBJECT TO THE CONDITIONS IN
THIS OFFICE LETTER.
No. B2/25419/95 Date: 11/11/95
FOR MEMBER SECRETARY
MADRAS METROPOLITAN
DEVELOPMENT AUTHORITY
MADRAS - 600 008.

tamil nadu
slum clearance board

revised layout at Nallankuppam
Ashok nagar 6th street in sur.no.
208 part & 209 part of block 66,
kodambakkam village,
corpn.dvn.no.115

scale: 1" = 33' [1:400]

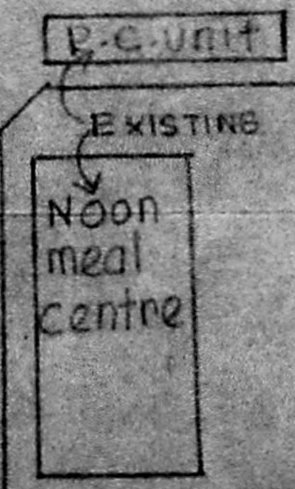
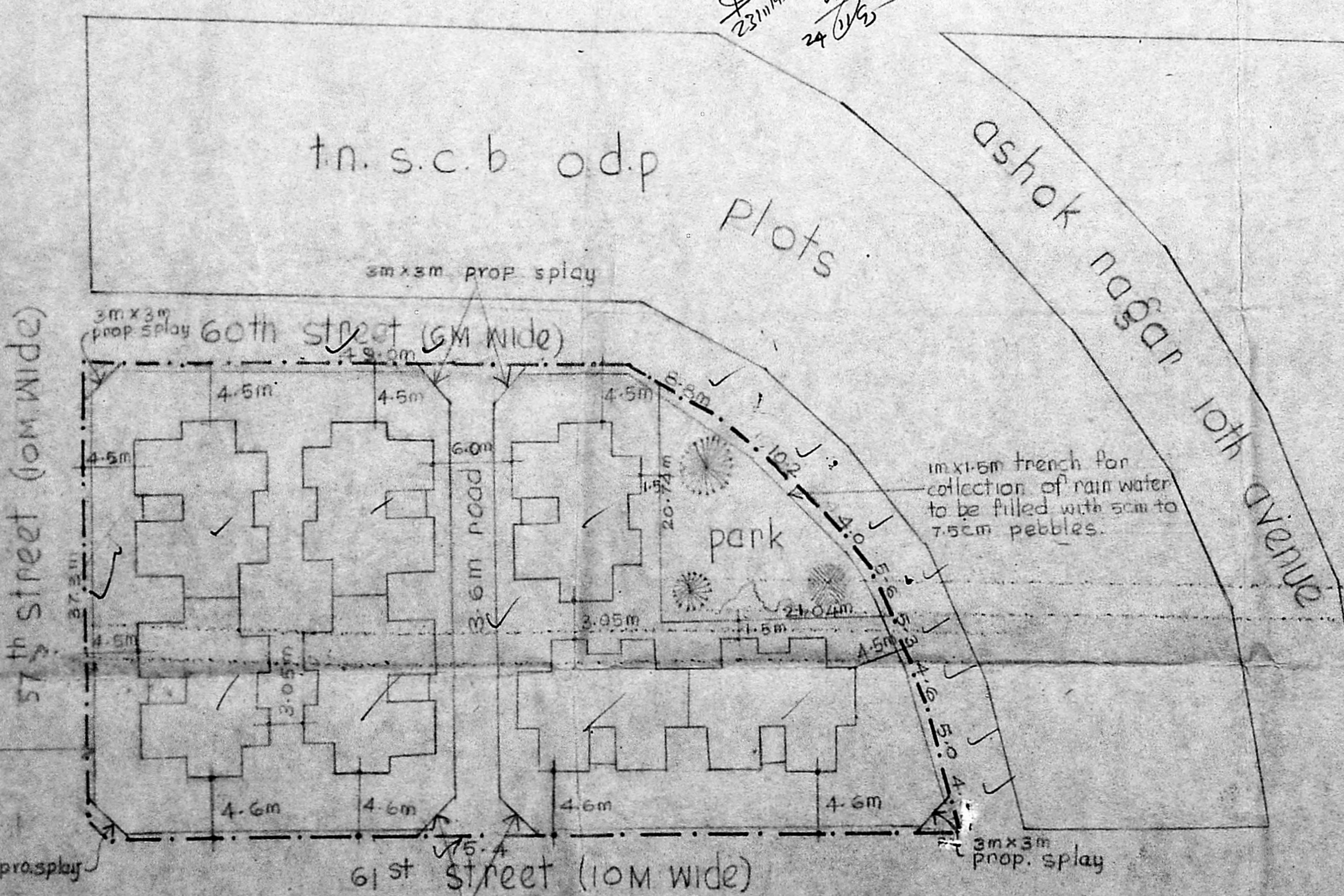
reference
as per t.d 8/93 (four storeyed)
24 in one - 7 blocks: 24 x 7 = 168
total no. of families = 168 ✓
extent of land: 11.59 gds. (0.2584 hect)
density: 650 families/hect.

land utilisation

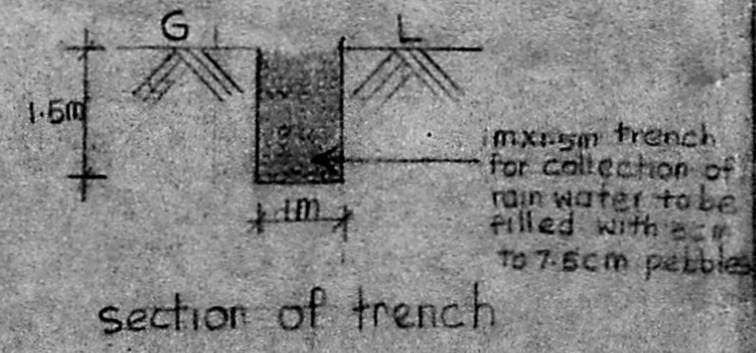
use	area in hect.	%	notation
residential	0.2194	84.90	
park	0.0260	10.06	
road	0.0130	05.04	
total	0.2584	100.00	

to k.k.nagar

Mambalam



private built up



M. Theel...
planning asst.

asst. planner

deputy planner

suptdg. engineer.

chief engineer

CEILING HEIGHT AMENDED AS SUGGESTED BY M.M.D.A.

10/10/88 copy

TAMIL NADU
SLUM CLEARANCE BOARD

TYPE DESIGN NO. 8/93

- Twenty four in one block
- Four storeyed -

Scale: 1" = 4'-0" (1:50)

REFERENCE

D	R.C framed with g/sheet door	3'-0" X 6'-6" (91 X 200)
D1	Ferro cement door (without frame)	2'-0" X 6'-0" (61 X 183)
W	Steel window	4'-0" X 4'-0" (122 X 122)
W1	- DO -	2'-0" X 3'-0" (61 X 91)
J	R.C Jali ventilator	2'-0" X 2'-0" (61 X 61)

Area details
Plinth area tenement 236 sqft
(or) 21.9 m²

FLOOR AREA (Multipurpose rooms)

Four storeyed unit

GROUND FLOOR

① ② & ③ = 12.3 m²
③ & ④ = 12.2 m²

FF & Typical floor

① ② & ③ = 13.4 m²
③ & ④ = 13.0 m²

GROUND FLOOR

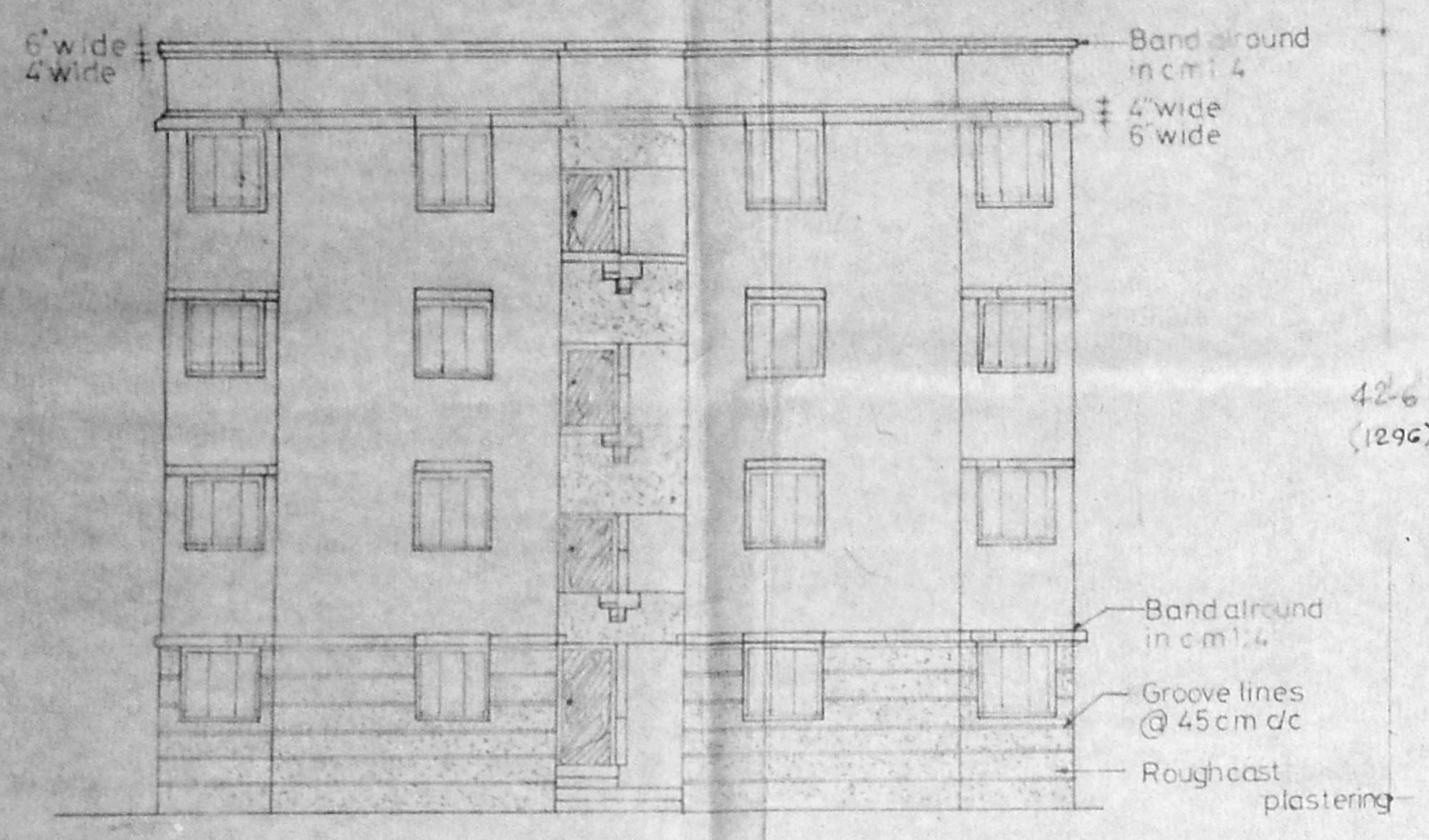
Area of staircase = 6.8 m²
passage = 5.9 m²
12.7 m²

FF & TYPICAL FLOOR

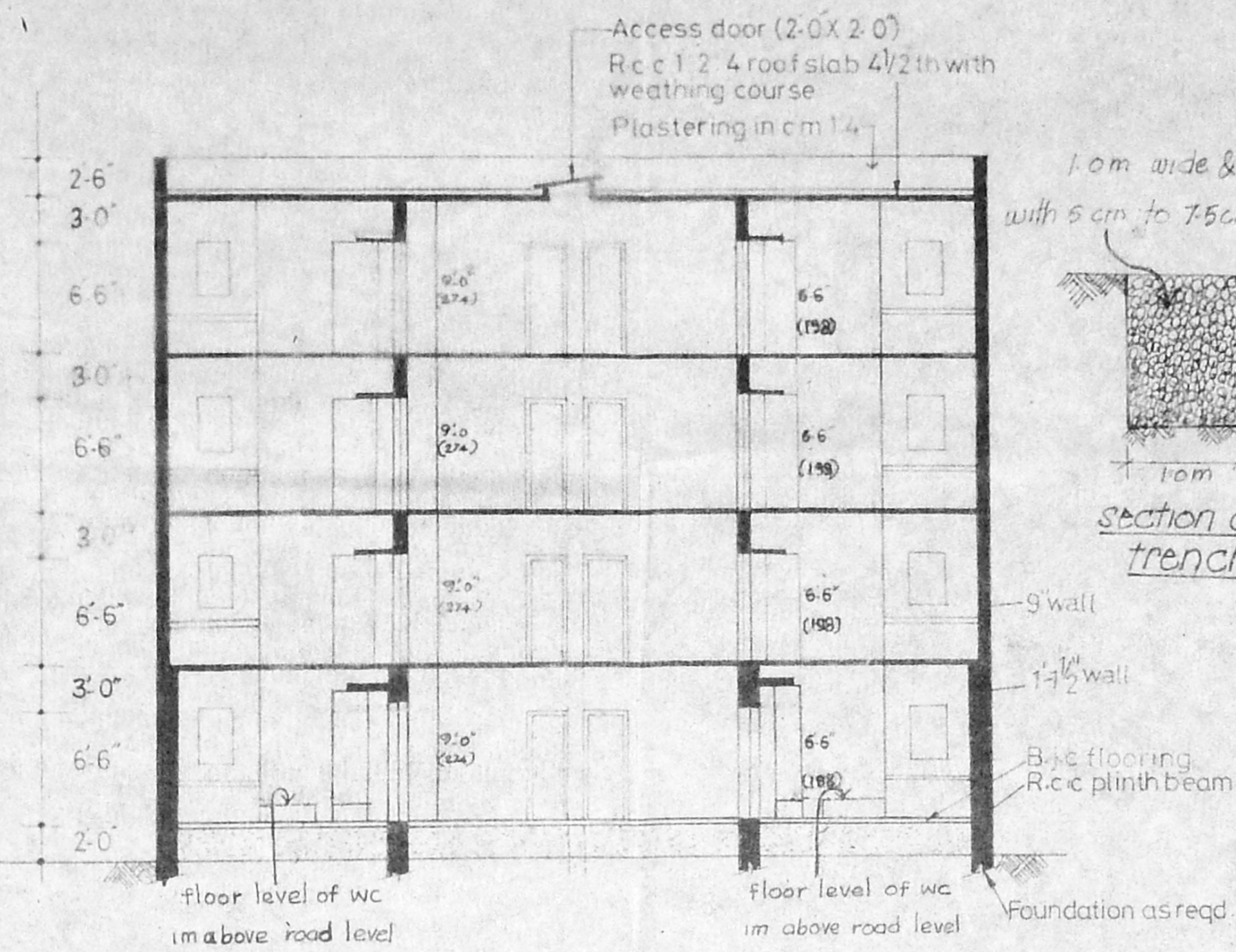
Area of staircase = 6.8 m²
passage = 7.2 m²
14.0 m²

Plinth area per tenement = 19.8 m²
9.1
(excluding staircase & passage)

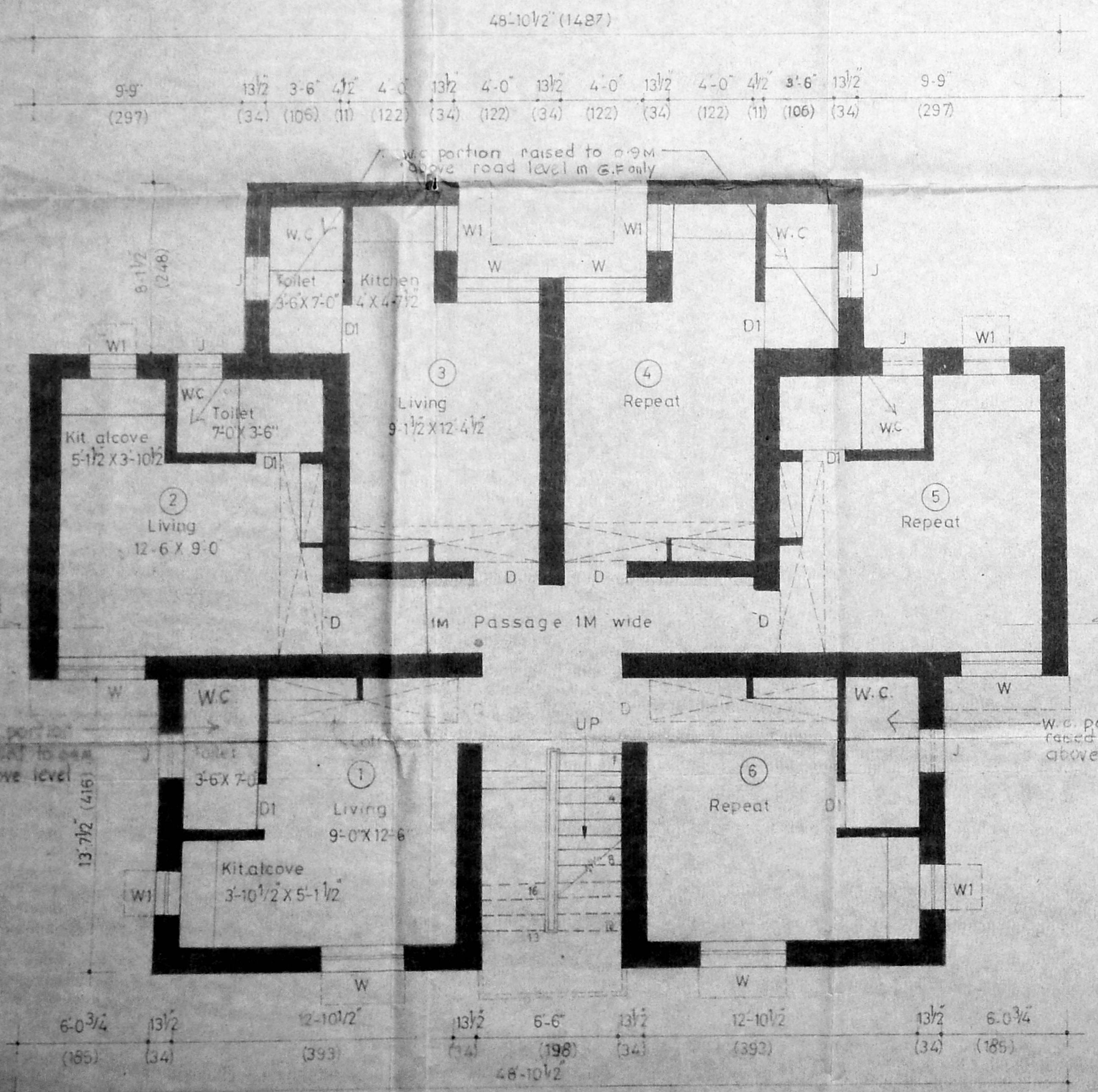
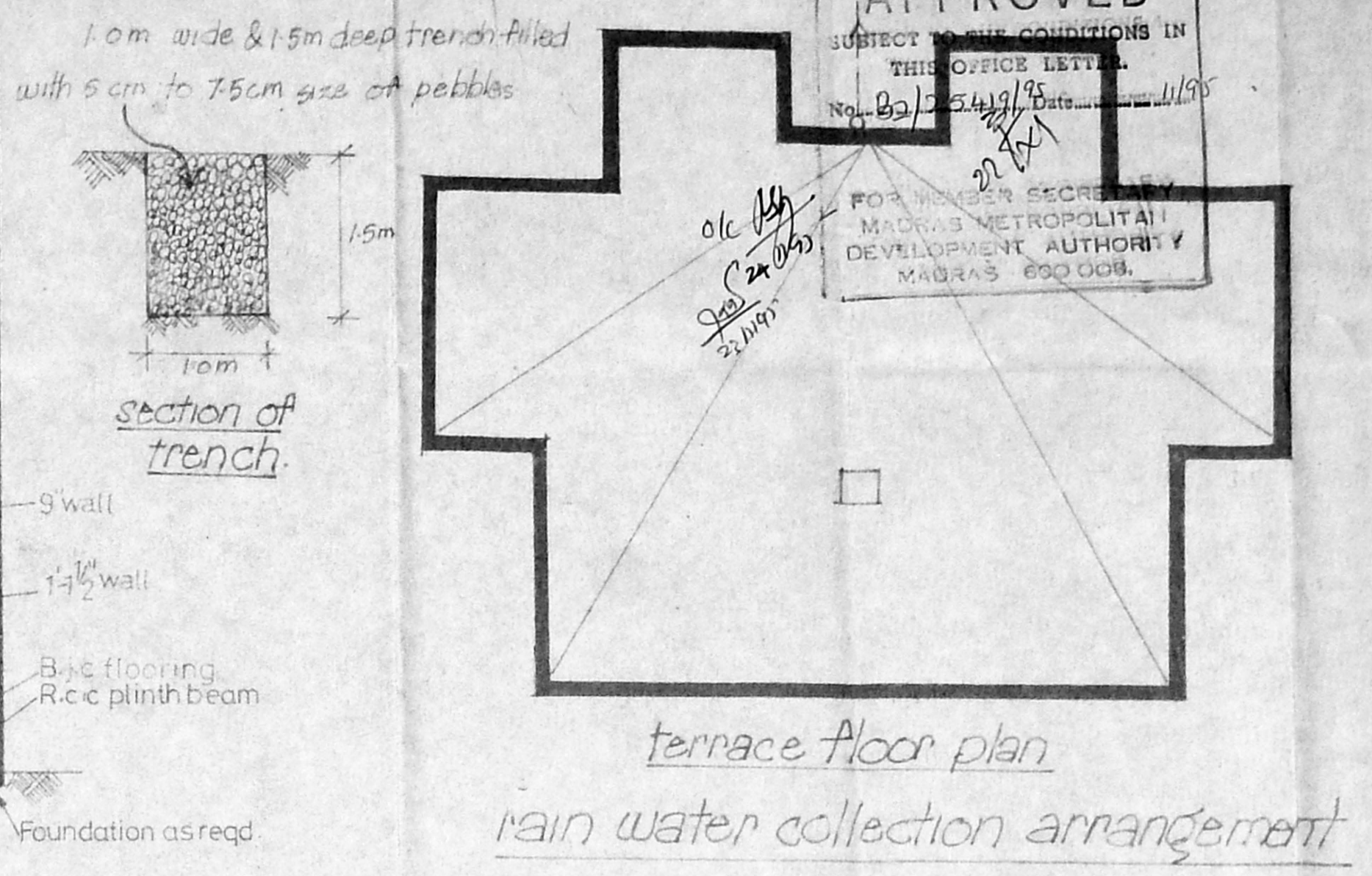
Plinth area per tenement = 19.6 m²
& typical
(excluding staircase & passage)



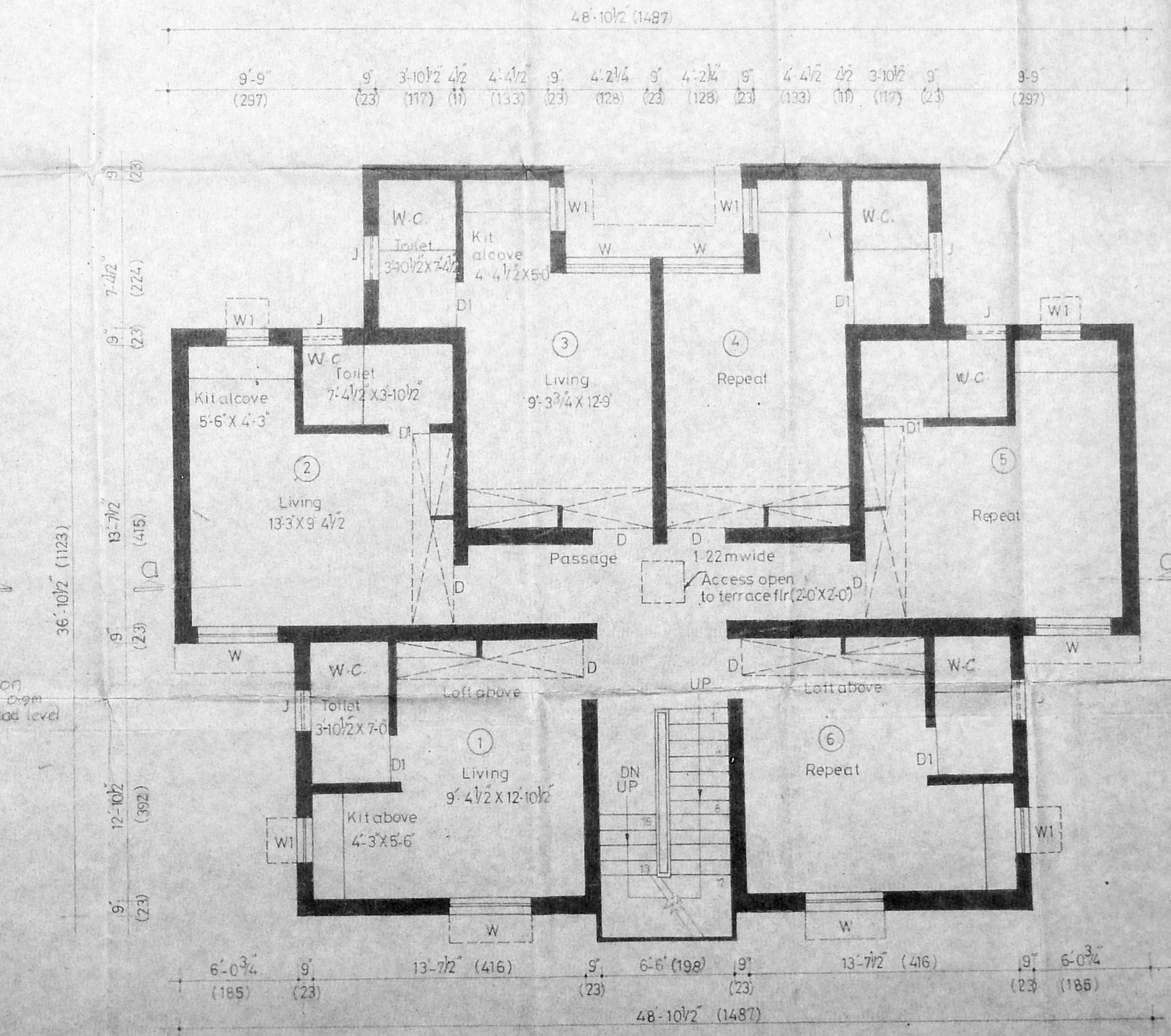
Front elevation (4 storeyed)



Section on a-a (4 storeyed)



Ground floor plan (4 storeyed)



First & typical floor plan (4 storeyed)

scale: 1" = 4'-0" (1:50)

TRUE COPY
Sd/- 22/1/95
Asst. Planner

Sd/- 2/1/95 Prepared by Asst planner DEPUTY PLANNER

SUPTDGE ENGINEER SR A K K V CHIEF ENGINEER

checked by traced by